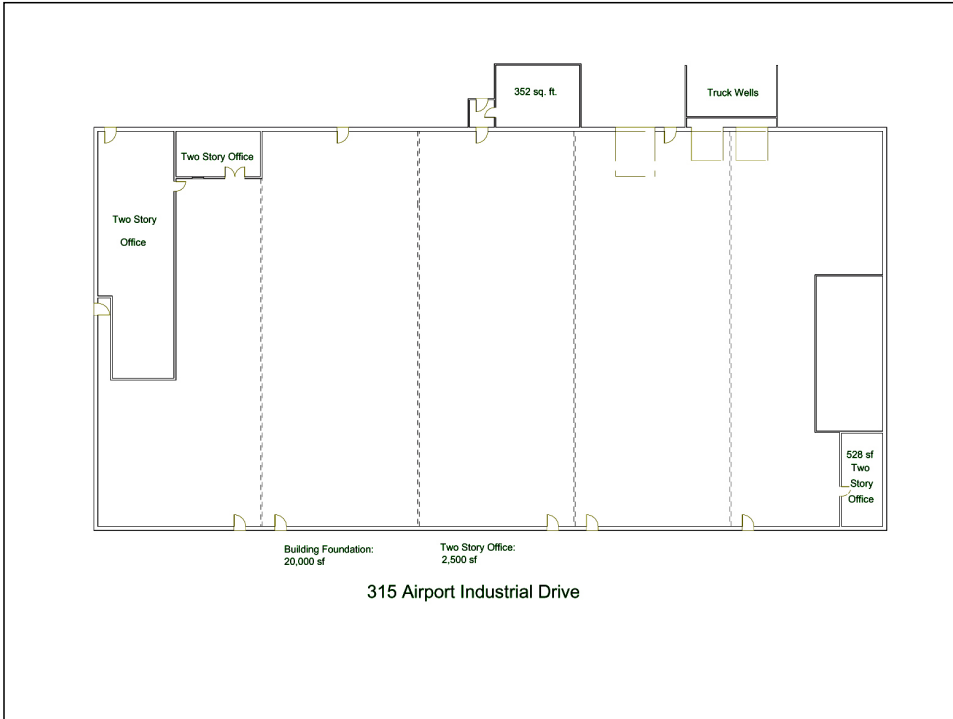


For Lease

315 AIRPORT INDUSTRIAL

YPSILANTI, MICHIGAN

20,000 sf with 3,000 sf office



LOCATION: Part of Airport Industrial Center, a multi-tenant industrial park with 272,000 sf in 11 buildings on 37 acres. Located off the M-17/US-12 bypass northwest of Willow Run Airport in Ypsilanti Township, Washtenaw County.

BUILDING: 315 Airport Industrial Drive is a 20,000 sf space which includes 3,000 sf office, 2 restrooms, 2 truck wells, 2 grade level overhead doors, 16' ceilings, and is fully sprinklered.

ZONING: I-2 General Industrial, Ypsilanti Township, 734-483-3943

UTILITIES: Gas and electric from DTE (800-477-4747), water and sewer from YCUA (734-484-4600), electrical service is at least 600 amps of 208 volt 3 phase.

ACCESS TO EXPRESSWAYS: Airport Industrial Drive has direct access to I-94 within 1 mile, 6 miles west of US-23, or 8 miles east of I-275.

WEBSITE: www.airportindustrialcenter.com

LEASE RATE: \$3.75 per sf Net. Tax, Insurance, and CAM is \$1.50/sf. Total monthly rent is \$8,750.

Contact: **David Hamilton, CCIM**

direct: 734-662-3745

daveh@swishercommercial.com

Building relationships.



208 East Washington St. Ann Arbor, MI 48104
tel: 734.663.0501 fax: 734.663.0316
www.swishercommercial.com